

NORTH COVE YACHT CLUB
2009 Outer Light Classic Regatta
June 27, 2009

SAILING INSTRUCTIONS

SCHEDULE OF RACES: The first warning signal will be fired at 1300 hours. More than one race may be sailed.

RULES: The series will be governed by the “rules” as defined in the Racing Rules of Sailing.

RESPONSIBILITY: It is the sole responsibility of the owner and/or skipper of each racing yacht to see that she is seaworthy and competently sailed and manned. The decision whether to race, not to race or continue to race is each skipper’s responsibility alone.

CLASSES: There will be at least two classes, including at least one cruising canvas. Their actual numbers will be chosen at the discretion of the Race Committee depending on the number of entrants. Class assignments will be based on PHRF numbers.

REPORTING AND WITHDRAWING FROM RACE: All yachts are requested to hail the committee boat and be recognized prior to the First Warning. As a courtesy to the Race Committee it is very important that any yacht withdrawing from a race make every effort to contact the committee by hailing her or by radio via VHF channel 68.

TIME LIMIT: The time limit for the first boat in each class will be 1630 hours. Yachts finishing more than sixty (60) minutes after the first yacht in their class or after the time limit whichever is later, shall be scored by the Race Committee, as “Did Not Finish”.

PROTESTS: Any protesting yacht must signal its intent to protest by hoisting a red flag, and must hail the committee at the first opportunity after finishing or withdrawing. A written protest must be filed with the committee as soon as possible, not to exceed one hour, after the arrival of the Committee Boat at the NCYC float.

RADIO COMMUNICATION: The Race Committee will monitor Channel 68 whenever possible. A yacht may use channel 68 to notify the Race Committee of her withdrawal. The Race Committee may use channel 68 to notify a yacht over early and to broadcast abandonment. It will not respond to radio communications during the starting procedure. Radio Communications by the Race Committee are informational and a matter of courtesy only. Only the Race Committee may request redress on an issue arising from radio or other courtesy communications. This changes RRS 62.1(a). While racing, a boat shall not conduct radio communications, including the use of mobile telephones and devices, not available to all boats.

STARTING/FINISHING LINE: The start/finish line will be between an orange flag on the committee boat and a large orange buoy.

Note: a spherical “stand-off” buoy may be anchored twenty (20) yards more or less from the committee boat. A starting yacht may not touch it or pass between it and the committee boat without restarting by rounding the committee boat to cross the line in the proper manner. This standoff buoy is not part of the starting line.

Yachts whose warning signal has not been made shall keep clear of the starting area and of all yachts whose warning signal has been made.

STARTS: The first warning will be at 1300 hours unless postponed. The starting order will be listed on the scratch sheet and classes will start in numerical order, for example, Class 1 will start first followed by Class 2; etc. A procedure consistent with Part 3 paragraph 26 of the current Racing Rules of Sailing will be used as follows:

Signal	Flag & Sound	Minutes Before Starting Signal	
Warning	Class Flag – Sound*	5	
Preparatory	P, I, Z, Z with I or Black Flag	4	Horn – Short Blast
One-Minute	Preparatory Flag Removed Horn – Long Blast	1	
Starting	Class Flag Removed – Sound Next Class Flag Goes Up**	0	

* Gun or Horn will be used at the Race Committee’s discretion.

** The Race Committee has the option of delaying the start for each succeeding class. In that case the warning signal for each succeeding class shall be made after the starting signal of the preceding class.

The warning signal for each succeeding class shall be made with or after the starting signal of the preceding class.

CLASS FLAGS: Numeral pennant "1" will designate Class 1, numeral pennant "2", Class 2, etc. as listed on the Scratch Sheet.

RACING AREA: The racing area will be as shown on the enclosed NORTH COVE YACHT CLUB RACING CHART. The starting/finishing line will be located approximately one mile west of the Saybrook Breakwater, Outer Light.

RACE COMMITTEE OBJECTIVES: This year the North Cove Race Committee plans to use drop marks (X & Y) with a primarily short windward leeward course for the spinnaker boats with the object of getting in two races for the spinnaker boats. Plans for the canvas class are one race with a triangular course including a windward mark and most likely a government mark. All this of course is weather permitting.

THE COURSES: Rounding marks will be selected from the circled lettered buoys identified on the attached RACING CHART or the drop marks X & Y set out by the Committee. Rounding marks will be signaled by a vertical display of letters on the committee boat. Marks must be rounded in the sequence displayed, reading from top to bottom. Arabic numeral two (2) at the bottom of the display signifies the entire course, including the starting mark, is to be sailed twice-around. If the starting line pin mark is left to starboard, the course letters will be red and all marks will be left to starboard. Exception, if a course mark is black that mark will be left to port. If the starting line pin is left to port, the course letters will be black and all marks will be left to port. Exception, if a course letter is red, that mark will be left to starboard. **NOTE** government buoy R"8" (Fl 4 sec Bell) southeast of the Connecticut River must be honored by any yachts sailing in its vicinity. A different course may be signaled for each class. Participants are also advised and cautioned that the depth in the vicinity of Bell R "8A" (middle of Long Sand Shoal) is about 3 ft at MLW.

MARKS (see Racing Chart- Centerfold):

- A** Large orange inflatable buoy of the starting line.
- B** Bell R"8C", Fl. R 4s near Six Mile Reef
- C** Gong RG "W", West end of Long Sand Shoal
- D** Bell R "2", fl R 4s, Cornfield Shoal
- F** RW Whistle "CF"
- J** RG Nun, "E", East end of Long Sand Shoal
- L** Bell R "2PG", Plum Gut
- M** RW Whistle "PI", N of Plum Island
- X** Temporary Mark – Large orange buoy
- Y** Temporary Mark – Large orange buoy

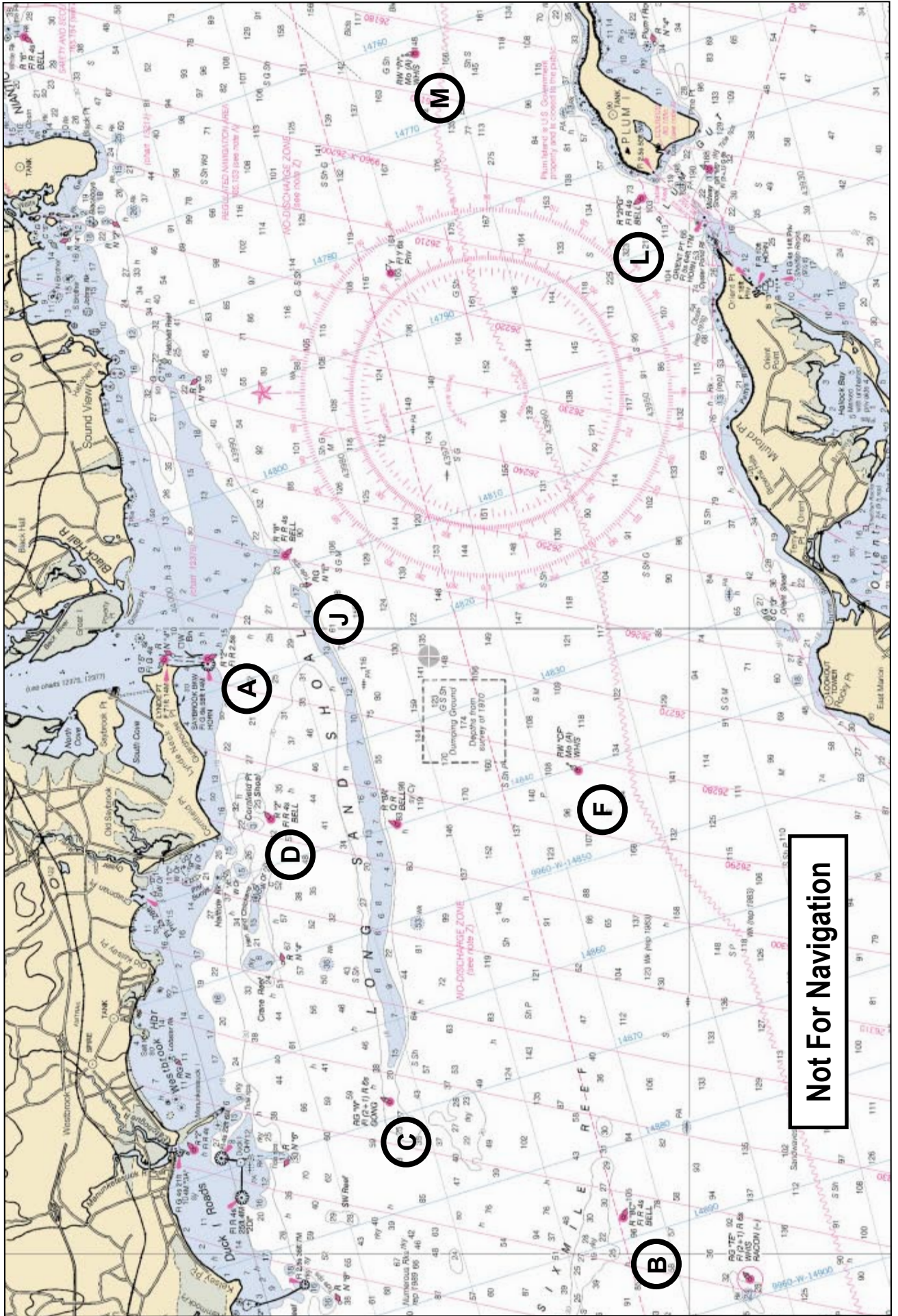
RECALLS: The race committee may hail premature starters by voice or on channel 68 VHF. Failure to hail will not relieve a yacht of its responsibility to start properly. A half hour penalty shall be added to the elapsed time of premature starters that do not restart.

When a general recall has been signaled, the start(s) for the succeeding class(s) will be postponed accordingly.

TIME ALLOWANCES: PHRF/ECSA handicap numbers will be used to compute corrected times using the Time on Time Method (650/(550+PHRF)).

MOORINGS: Limited moorings are available. Please make arrangements with the Club steward at 860-388-9132 or on channel 78, which the steward monitors.

**NORTH COVE YACHT CLUB
Outer Light Classic Regatta
Racing Chart**



Not For Navigation